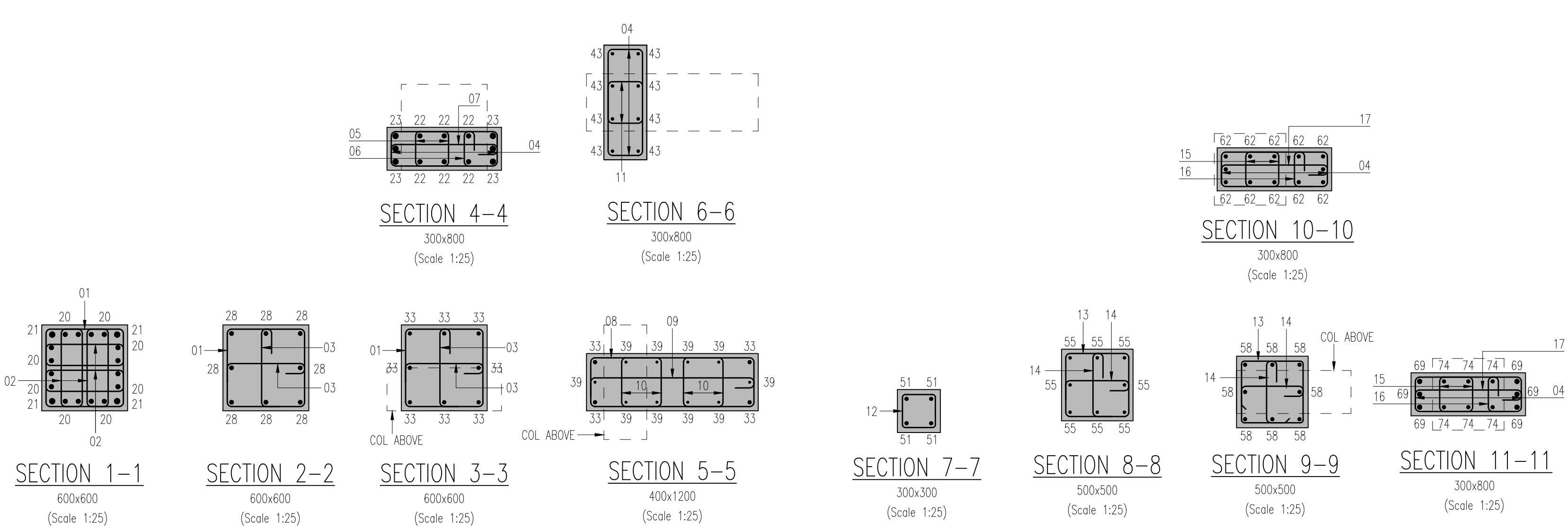


- This drawing shall be read in conjunction with all relevant drawings.
- Concrete Grade to be RC 32/40.
- For bar bending schedules refer to schedules no. 4706200-BBS/8131/01-03.
- Minimum cover to all reinforcement to be as follows:  
Columns  
35mm All Faces U.N.O.
- All concrete work to be in accordance with BS8110 and all relevant standards  
T1 = First top layer of reinforcement  
T2 = Second top layer of reinforcement  
B1 = First bottom layer of reinforcement  
B2 = Second bottom layer of reinforcement  
N1 = First near face layer  
N2 = Second near face layer  
F1 = First for face layer  
F2 = Second for face layer  
BF = Both faces  
EF = Each face  
LL = long leg  
ABR = Alternate bars reversed  
ALT = Alternately place bars
- Minimum Laps to be:  
H10 = 400 mm      H12 = 500 mm  
H16 = 650 mm      H20 = 800 mm  
H25 = 1000 mm    H32 = 1300 mm  
H40 = 1600 mm
- Kicker to be 150mm U.N.O.



NOTE:  
FOR COLUMN STARTER REINFORCEMENT REFER TO DRG. No's. 47062002-8025/8026.

NOTE:  
FOR FURTHER COLUMN REINFORCEMENT REFER TO DRG. No's. 47062002-8130 & 8132 ~ 8138

